

Pair-of-Corders

A Wife and Husband duo-team, for nearly 30-years & counting (*who's counting?!*) creating fun & useful items with Paracord for **(mostly)** enjoyment and for *(little)* profit!



Want something made of Paracord? We can bet your best, furry, friend does too!

We invite you to browse the site to get an idea of something(s) you may want us to make for you OR for your very cool & lucky significant other(s).



Pair-of-Corders

About Our Para-Products:

This is genuine **Type III Commercial grade 550** paracord rated with a minimum breaking strength of 550 pounds. USA made by a certified US Government contractor and is UV, mildew, rot and mold resistant. The braided sheath comes in a variety of colors and its 7 inner strands provide a multitude of uses, e.g., survival bracelets, lanyards, belts, dog collars and leashes, gun straps, countless survival needs and hundreds of other uses by crafters and outdoor enthusiasts. Other potential uses include attaching equipment to harnesses, as strapping to avoid losing small or important items, tying items to vehicle racks, securing nets to trees or vehicles, tourniquets, etc.

NOTE: Mil-spec 550, Type III will be slightly thicker than commercial grade due to its three nylon fibers per inner core as opposed to the two fibers per core of the commercial version. Mil-spec cord will be closer to a 4 mm thickness, where commercial versions are closer to a 3 mm thickness. Both Mil-spec and Commercial grade, 550, Type III are rated for a minimum 500-pounds of breaking strength.

The inner strands of the core can also be removed when finer string is needed. These uses include sewing thread to repair gear, fishing line, tripwire, nets, traps, and other emergency and/or survival situations. The nylon sheath is often used alone (the strands in the core removed) when a thinner or less elastic cord is needed, such as when used as a boot lace.

The ends of the cord can easily be melted to prevent fraying.



Afghan Veteran:



In Stock

Amazon:



In Stock

Blue Camo:



In Stock

Blue Snake:



In Stock

Camo Pattern:



In Stock

Candy Cane:



In Stock

Candy Snake:



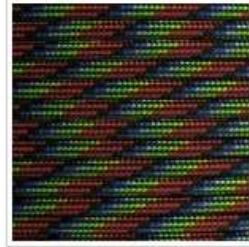
In Stock

Cosmic:



In Stock

Dark Stripes:



In Stock

Day Glow:



In Stock

Decay:



In Stock

Deep Woods:



In Stock

Denim:



In Stock

Desert Camo:



In Stock

Fall Camo:



In Stock

Fireball:



In Stock

Green Speck Camo:



In Stock

Harley:



In Stock

Harmony:



In Stock

Honey Badger:



In Stock

Kaleidoscope:



In Stock

Kelly Green Camo:



In Stock

Neon Orange Camo:



In Stock

Orange You Happy:



In Stock

Plasma Purple:



In Stock

R Camo:



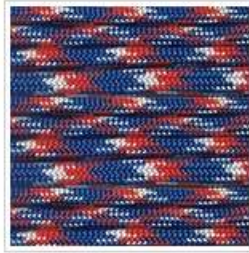
In Stock

Red White & Blue:



In Stock

Red White & Blue Camo:



In Stock

Reflective Neon Orange:



In Stock

Rockstar:



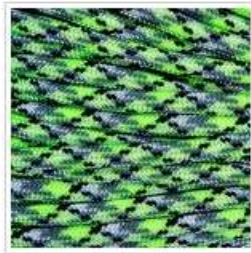
In Stock

Shamrock Frost:



In Stock

Slime Zombie Apoc:



In Stock

Sneaky Pink Camo:



In Stock

Stars & Stripes:



In Stock

Touch of Grey:



In Stock

Trippin':



In Stock

Urban Camo:



In Stock

USMC:



In Stock

Viper:



In Stock

Virus:



In Stock

Wolverine:



In Stock

Yellow Camo:



In Stock

Acid Purple:



In Stock

Black:



In Stock

FS Navy Blue:



In Stock

Imperial Red:



In Stock

Neon Orange:



In Stock

Neon Pink:



In Stock

Neon Turquoise:



In Stock

Neon Yellow:



In Stock

Olive Drab:



In Stock

Royal Blue:



In Stock

White:



In Stock

Yellow:



In Stock

Prices:

Below are tips for proper sizing as well as general pricing for various Paracord products and accessories. Please contact us at pair-of-corders@hotmail.com should you have any questions.

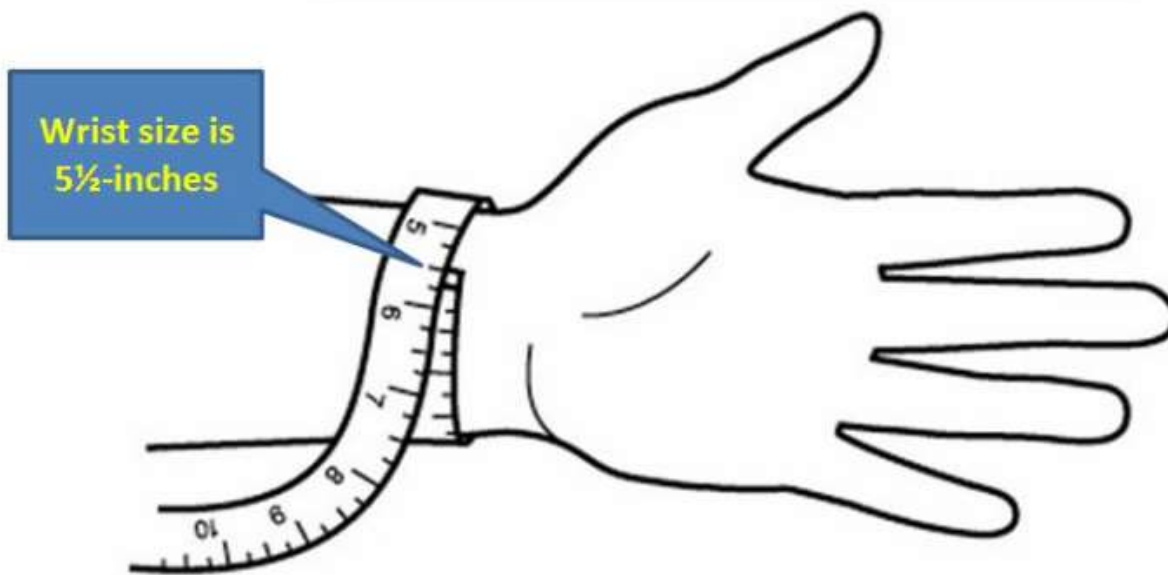
Bracelets:

The pricing for a "standard" paracord bracelet is \$1/inch, e.g., a Medium aka an 8" (diameter/long) bracelet would be \$8.

(Someone with a 7" diameter wrist would typically need an 8" bracelet.)

- XS(≤ 6" wrist size)7" bracelet (\$7)
- Small(6" – 6½" wrist size)7½" bracelet (\$7.50)
- Medium(6½" – 7" wrist size)8" bracelet (\$8)
- Large(7" – 7½" wrist size)8½" bracelet (\$8.50)
- XL(>7½" wrist size)9½" bracelet (\$9.50)

Proper Measurement is Important.



Using a cloth tape measure (or a piece of paper or string) wrapped around your wrist, determine the size (diameter) of your wrist, in inches.

In the picture above, the wrist size is 5½-inches.

(Do not add to this measurement.)

In the example above, 5½" (measured wrist size) and therefore an XS (7") bracelet would be ordered.

The extra length (~ 1") is added for a comfortable fit.

NOTE: the average wrist size of a typical adult is usually about 7". Thus, we'd make an 8" (MED) bracelet for a 7" wrist. This would cost \$8, w/o any special add-ons, e.g., Charm, Compass, Whistle Buckle, Reflective Paracord, etc.

Pet Collars:

Pricing for a "double" pet collar (with a sturdy D-Ring & Split Ring) would typically range from \$20 - \$25, depending on actual size (usually 16" to 20" diameter collars). These "double" pet collars are typically used for larger pets, e.g., 15 to 20-pounds and greater.

The cost would be greater for extras, e.g., Charm, Special Buckle, etc.

Costs for a "single" pet collar (identical to how a bracelet is made, but also w/ a D-Ring + Split Ring) would be \$1.50/inch. These collars are typically for smaller pets, cats, dogs, puppies weighing less than 15-pounds.

Proper Measurement is Important! 😊

Collars are made to your specifications, are not adjustable and are not returnable so PLEASE measure accurately! Here's how to measure ...

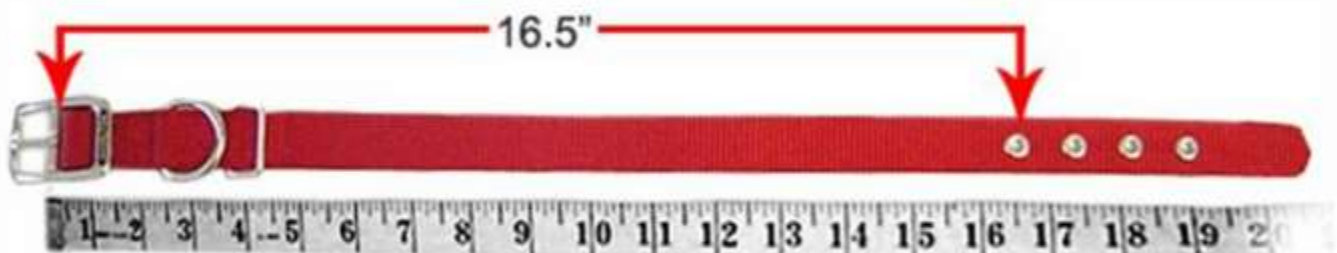


Collar Sizing

The BEST way to determine the correct size is to simply use an existing, properly sized/fitted dog collar as depicted below ...



SNAP ON COLLAR: Measure your pet's current collar as shown above. This collar measures at 10 inches.



BELT BUCKLE COLLAR: Measure your pet's current collar as shown above. This collar measures 16.5 inches to the first hole.

Use the measuring points noted above, e.g., flat end to flat end (**top picture**) or buckle/collar end to hole used (**bottom picture**).

Alternate Collar Size Determination:
(Only use if you do not have a collar to obtain the proper size.)

With a cloth measuring tape (or a piece of paper or string), as depicted below to measure around the thickest part of your pet's neck near the shoulder.
Slide one or two fingers under the tape measure to ensure the collar is not too tight.



**Collar size is
20-inches**